



### Oberlin College

#### Austin E. Knowlton Athletics Complex

##### Facility Overview

The Austin E. Knowlton Athletics Complex is a brand new state of the art facility. The artificial field turf makes the facility ideal for supporting multiple teams. The football team, field hockey team, and men and women's lacrosse teams all play their home games on this field. The artificial turf eliminates the wear and tear that would be visible on a natural grass surface. The facility is equipped with lights for night games. To go along with a brand new stadium and playing surface, there are also brand new locker rooms in the facility. The newly renovated locker rooms currently service every outdoor varsity sports team.

##### Fan Experience

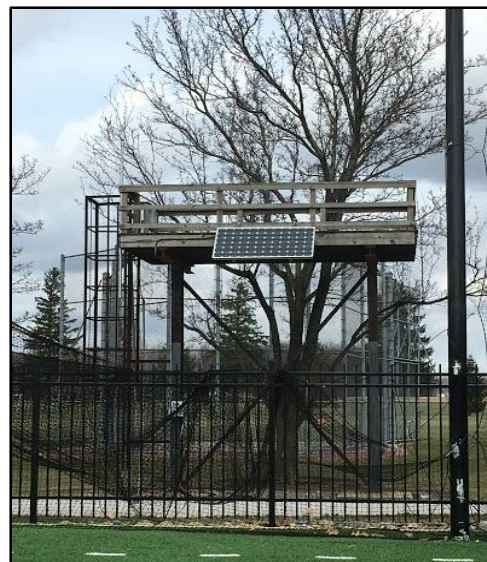
Fans have an excellent view of the field from any seat in the stadium. Concession stands and restrooms are easily accessible and readily available. The entrance to the stadium is a convenient distance from the parking lot.

##### Press Box & Scoreboard

The press box is brand new with an excellent view of the field from its elevated location. The scoreboard is located in the end zone opposite of the locker rooms and gives fans an easy view of the game score.

##### Recommendations for Improvement

- The top priority for the facility is a scoreboard upgrade.
  - This could be short term fix with a new paint job, but in the near future a new scoreboard is needed.
- The film stand behind the end zone needs enhancements
  - A new paint job or a new film stand is recommended.
- New permanent or semi-permanent lacrosse lines on the playing field.





### Dill Field

#### Facility Overview

The home of the Oberlin baseball team, Dill Field has an artificial turf infield and a natural grass outfield. The infield is completely turf including the mound, batters boxes, and areas around the bases.

#### Fan Experience

Fans have an excellent view from any seat in the stands. The stands were recently renovated to feature stadium seating. Additionally, the stands are up to the standards set by the ADA with a ramp that is wheelchair accessible.

#### Press Box & Scoreboard

The press box was recently built and provides a great view of the field for official scorers and scoreboard operators. The scoreboard is located behind the fence in left-center field. The scoreboard has an inning by inning score tracker and also tracks runs, hits, and errors.

#### Recommendations for Improvement

- Renovate dugouts
- Redo fencing in foul territory
  - At a minimum there needs to be a cover on top of the fence to prevent injuries to players.
- Bigger scoreboard
- Batters boxes & catchers box need to be redone
  - After years of use the batters boxes become uneven and need to be resurfaced.
- Lights for night games
- Another outdoor batting cage
- Turf bullpens
  - With current all dirt mounds in the bullpen, pitchers track dirt and mud onto the game mound.
- Press box upgrade
  - Can use a heating and cooling system
- Closet/Shed for storage





### Oberlin College

#### Culhane Field

##### Facility Overview

Home to the Yeowomen softball team, Culhane Field has an all dirt infield and a natural grass outfield. Both home and away dugouts are enclosed. There is one batting cage located on the first base side.

##### Fan Experience

There are two sets of stands behind the backstop for home and away fans. From these bleacher areas a view of the whole field is available from any of the seats.

##### Press box & Scoreboard

There is currently no press box available at Culhane Field. The scoreboard is located behind the right center field fence. Installed in 2012, the scoreboard is in excellent condition and is easily visible for fans in attendance.

##### Recommendations for Improvement

- Enclose bullpen
  - Current bullpen is next to the batting cage and does not have a backstop
- Revamp dugouts
  - Hooks, helmet rack, bat rack, new bench
- New fencing for the backstop and foul territory
- Warning track around the whole field
- Build a press box
- Fix/replace wood fence behind dugout
- Paint foul poles
- New dirt for the infield







### Oberlin College

#### Khan Track & Shults Field

##### Facility Overview

Shults field is a natural grass surface with a combination of Kentucky Blue Grass and perennial rye. This is the home of the men and women's varsity soccer teams. Khan track has a poured urethane surface and is also commonly used by Oberlin community members.

##### Fan Experience

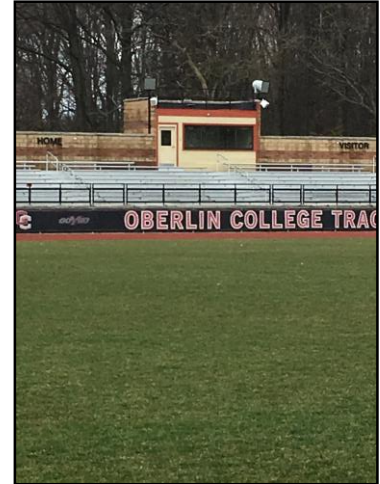
Fans are able to experience games from the bleachers on the west side of the field. The scoreboard is facing east which is great for the fans in the bleachers but doesn't allow fans approaching the stadium to see the score.

##### Press Box & Scoreboard

The press box is currently in good condition. An enclosed, protected video platform above the press box would be an ideal addition for the space.

##### Recommendations for Improvement

- Press box renovations
  - Enclosed film stand on top of press box
- Repaint lines on the track
  - The current ones are fading
- Possible new roof on ticket stand
- Renovated practice fields
  - New drainage and reseeding to one type of grass
- New Hammer/discus cage moved to the field north of the track
  - The current cage, located to the north of the Knowlton complex is a hazard to athletes due to the chain link fence
- New Scoreboard
- New windscreens
  - Lacrosse does not play on this field anymore





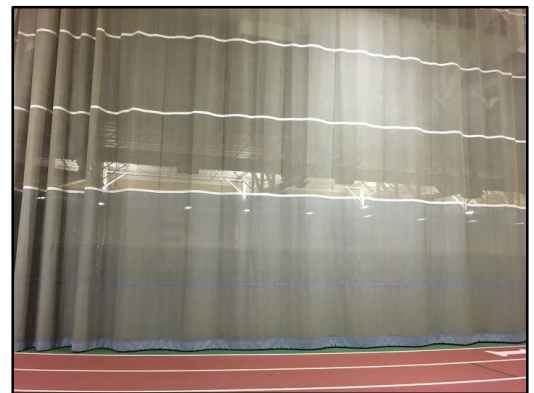
### John W. Heisman Fieldhouse

#### Facility overview

The John W. Heisman Fieldhouse is home to the men and women's indoor track teams. There are six 200-meter lanes which are regulation size for indoor track events. Included in the facility are four tennis courts that are used by the varsity tennis teams and often frequented by Oberlin community members.

#### Recommendations for Improvement

- New curtain around tennis courts
- Permanent long jump on both runways
- Additional padding on the walls at the end of sprint straights.
- New track surface
  - The surface has a lifespan of 10-15 years and the current surface is 25 years old.
  - Athletes are complaining of injuries including foot, shin, knee, and back issues.
- Tennis courts need to be resurfaced in the next year or two years
- New scoreboard
- New sound system
- Paint air ducts
- New banners
- More storage space
- Upgrade All-conference awards on the walls





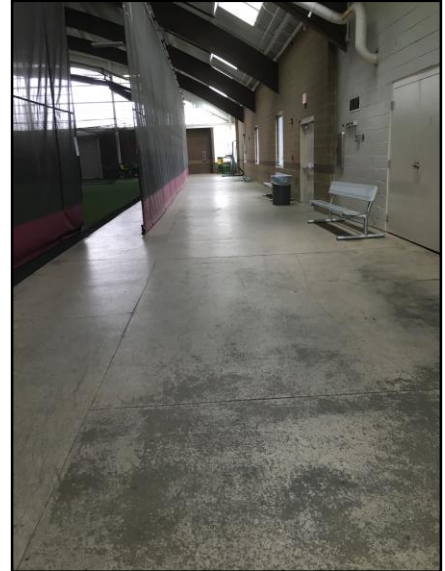
### Williams Field House

#### Facility Overview

Built in 2009, the Williams Field House is an indoor turf facility that serves as an indoor practice surface for several teams. Equipped with batting cages, the baseball and softball teams are able to get their hitting in even during times of inclement weather. This enclosed turf facility also serves as an indoor practice space for the Men and Women's Lacrosse Teams as well as other outdoor Fall Sports Teams.

#### Recommendations for improvement

- More closet/storage space
  - Teams are limited to the areas they have available to store their equipment for practices indoors.
- Improve cushion between turf and cement.
  - Athletes and coaches complaining of injuries.
- Aesthetics
  - Place large Oberlin College banner in the entrance to the building.
  - Exterior could use some renovations to improve overall appeal.
- Expand turf closer to the walls for more space
  - Currently there is awkward space between the walls and the turf. This area could provide more practice space and less unused space.





### Oberlin College

#### Main Gym

##### Facility Overview

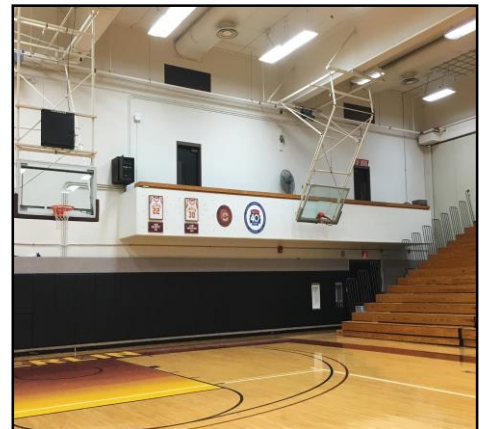
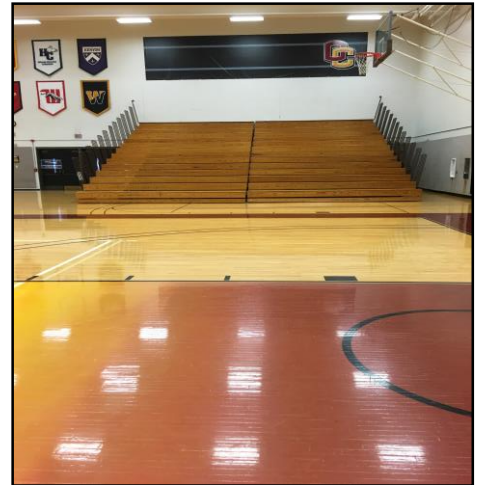
Main Gym is the home court for Men and Women's basketball and Women's volleyball. The current scoreboards, with the main one being a Daktronics, make it readily accessible to view the score of games. The wooden floors were refinished in the summer of 2010 leaving a pristine and modern look.

##### Fan Experience

Currently, there is an abundance of bleacher space resulting in plenty of seating for spectators. The two score boards at each end of the gym also enhance the fan experience.

##### Recommendations for Improvement

- New bleachers
  - Easy to pull in and out
  - OC colors
  - Limit to one side of the gym
- New locker rooms
- New hoops
- Aesthetics
  - Paint the walls
  - Update banners
  - Oberlin logo on wall pads
- New speaker system
- Update press box
- Potential for two volleyball courts
- Outdated lines on current volleyball court
- Ventilation system
  - Little/no air conditioning in the summer
- Spot for volleyball and basketball records
- Update water fountains
- New scorer's table







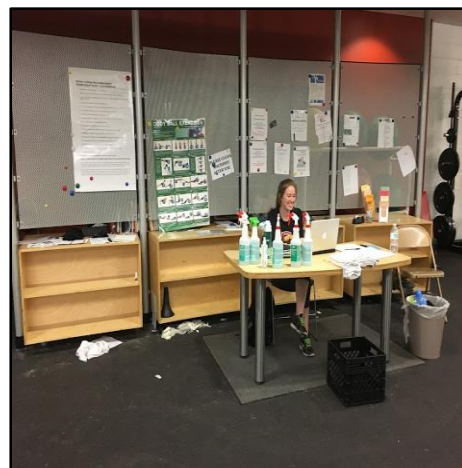
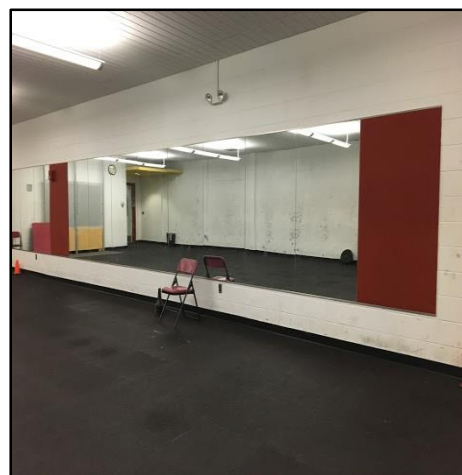
### Weight Room

#### Facility Overview

The weight room located in Phillip's currently serves as the main work out space for all varsity and club teams as well as the general population of gym users. Recent renovations were made in 2010 but there is more room for general improvement.

#### Recommendations for Improvement

- Fix the floor in the dumbbell area / eliminate the raised flooring all together. Would be more efficient if it were a flat ground area.
- Put the machines in the multipurpose room so that we can close it off and have two somewhat separate spaces for athletes and general population.
- If it is not a support wall, then tear down the middle wall to open up more space.
- Add cubby holes or lockers so that people have a place to put their belongings during a workout.
- Add turf to one room in the weight room.
- Fix speakers in the multipurpose room.
- Add new bars. We have several bars that are bent, and we don't have enough of both power and Olympic bars.
- Remove the plate loaded leg press and get a double leg press that works well.
- Get a smith machine (general population really wants that)
- Close off the back section of the weight room where the front desk person sits and create an office for the strength coach.
- Remove the yellow ceiling tiles. They are unnecessary.
- Get a few free-range motion cables for multipurpose use.
- Get a better scale that doesn't run on batteries.







### Don Hunsinger Courts

#### Facility Overview

The Don Hunsinger tennis facility features 12 courts with viewing areas for spectators. The facility has hosted an NCAA tournament as well as high school level state tennis tournaments.

#### Fan Experience

Bleachers are currently available for fans to view matches on the various courts. Small flip score boards are available on game days to see the scores of the matches on the wide spread of courts.

#### Press box & Scoreboard

Other than the small flip scoreboards previously mentioned there is no electronic score board for viewing on a large scale. Additionally no official press box is available at this outdoor facility.

#### Recommendations for Improvement

- Install a press box
- Update current storage shed
  - In the short term could use a fresh paint job.
- Resurface tennis courts
  - Almost have met their expiration date.
- Outdoor path connecting various courts
  - Until a larger scale renovation can be made, a concrete or other designated trail would make the courts more accessible to fans and players.
- Redo the entire area
  - Currently not utilizing the space to its full potential.





### Oberlin College

#### Cross Country Course

##### Facility Overview

The Oberlin College cross country course is the home to the men and women's cross country teams. It is located northwest of Kahn Track and Shults Field. The trail is mainly designed for 1 mile, 1K, and 800 meter loops. The running trail was built and opened in 2008.

##### Recommendations for Improvement

- A section of the track floods multiple times per year
  - At the southernmost section of the trail there is a 500 meter area that continually floods
  - It needs to be excavated and rebuilt to avoid future flooding in this area

